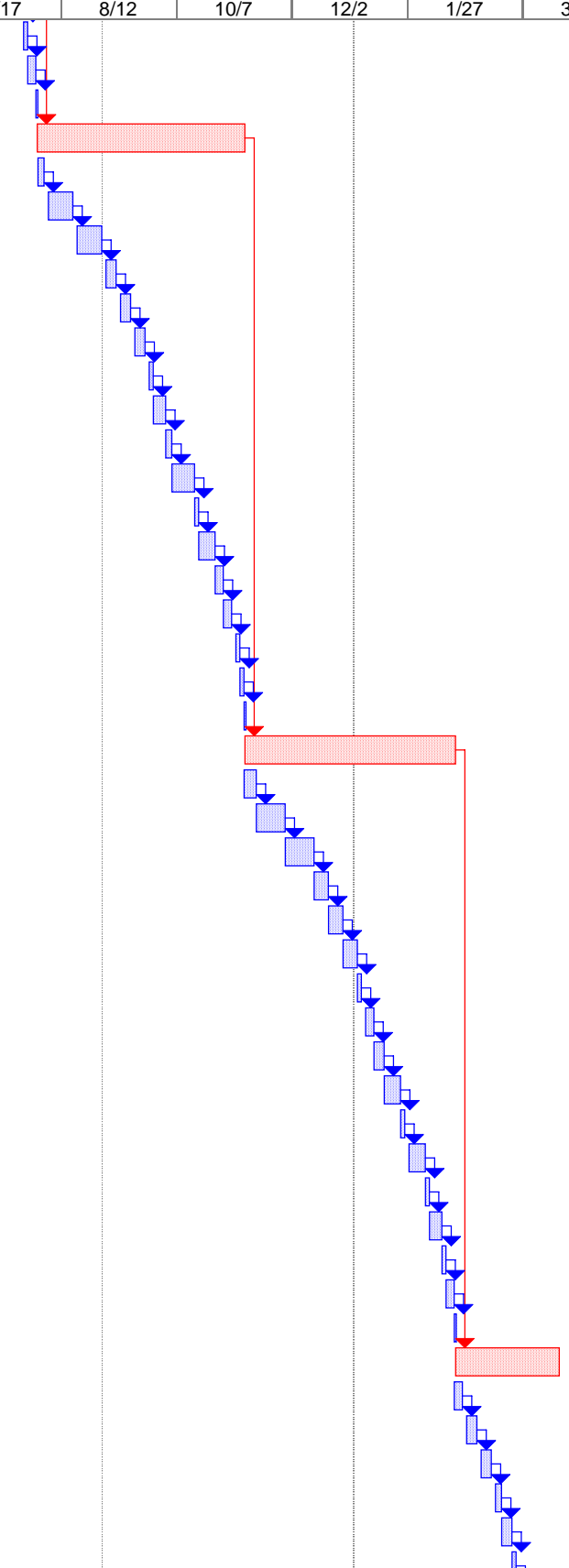


ID	Task Name	Duration	Start	Finish	Predecessors	September 1		January 1		May 1		September 1		January 1		May 1		September 1	
						7/16	9/10	11/5	12/31	2/25	4/22	6/17	8/12	10/7	12/2	1/27	3/23	5/18	7/13
1	<b>Borland Lab Reno</b>	449 days	Mon 11/27/06	Thu 8/14/08															
2	<b>Pre Construction</b>	357 days	Tue 11/28/06	Wed 4/9/08															
3	<b>Abatement</b>	45 days	Thu 11/30/06	Wed 1/31/07															
4	Abatement Ground Floor	13 days	Thu 11/30/06	Mon 12/18/06															
5	Abatement First Floor	13 days	Tue 12/19/06	Thu 1/4/07	4														
6	Abatement Second Floor	13 days	Fri 1/5/07	Tue 1/23/07	5														
7	Abatement Penthouse	6 days	Wed 1/24/07	Wed 1/31/07	6														
8	<b>Demolition</b>	48 days	Mon 12/25/06	Wed 2/28/07															
9	Demo Sales Room	5 days	Mon 12/25/06	Fri 12/29/06															
10	Demo Garage in Rear	5 days	Mon 1/1/07	Fri 1/5/07	9														
11	Demo Interior Walls Ground Floor	4 days	Mon 12/25/06	Thu 12/28/06															
12	Temporary Support Ground Floor	8 days	Fri 12/29/06	Tue 1/9/07	11														
13	Demo Interior Walls First Floor	4 days	Wed 1/10/07	Mon 1/15/07	12														
14	Temporary Support First Floor	8 days	Tue 1/16/07	Thu 1/25/07	13														
15	Demo Interior Walls Second Floor	4 days	Fri 1/26/07	Wed 1/31/07	14														
16	Temporary Support Second Floor	8 days	Thu 2/1/07	Mon 2/12/07	15														
17	Demo Interior Walls Pent. House	4 days	Tue 2/13/07	Fri 2/16/07	16														
18	Temporary Support Pent. House	8 days	Mon 2/19/07	Wed 2/28/07	17														
19	<b>Site Prep.</b>	26 days	Tue 11/28/06	Tue 1/2/07															
20	Install Construction Fence	3 days	Tue 11/28/06	Thu 11/30/06															
21	Remove Existing Landscape	5 days	Fri 12/1/06	Thu 12/7/06	20														
22	Tree and Shrub Protection	13 days	Fri 12/8/06	Tue 12/26/06	21														
23	Install Access Roads and Parking	5 days	Wed 12/27/06	Tue 1/2/07	22														
24	<b>Interior Construction</b>	290 days	Thu 3/1/07	Wed 4/9/08	8														
25	<b>Basement Construction</b>	36.25 days	Thu 3/1/07	Fri 4/20/07															
26	Excavate Elevator Pit	5 days	Thu 3/1/07	Wed 3/7/07															
27	Install Structural Steel	7 days	Thu 3/8/07	Fri 3/16/07	26														
28	Duct Work Rough-in	7 days	Mon 3/19/07	Tue 3/27/07	27														
29	Chilled Water Rough-in	7 days	Wed 3/28/07	Thu 4/5/07	28														
30	Electrical Rough-in	5 days	Fri 4/6/07	Thu 4/12/07	29														
31	Fire Protection Rough-in	6 days	Fri 4/13/07	Fri 4/20/07	30														
32	<b>Ground Floor Construction</b>	72.5 days	Fri 4/20/07	Tue 7/31/07	25														
33	Install Structural Steel	4 days	Fri 4/20/07	Wed 4/25/07															
34	Duct Work Rough-in	10 days	Thu 4/26/07	Wed 5/9/07	33														
35	Fire Protection Rough-in	10 days	Thu 5/10/07	Wed 5/23/07	34														
36	Plumbing Rough-in	5 days	Thu 5/24/07	Wed 5/30/07	35														
37	Electrical Rough-in	5 days	Thu 5/31/07	Wed 6/6/07	36														
38	Metal Wall Stud Framming	5 days	Thu 6/7/07	Wed 6/13/07	37														
39	Insulate Walls	2 days	Thu 6/14/07	Fri 6/15/07	38														
40	Hang Drywall	4 days	Mon 6/18/07	Thu 6/21/07	39														
41	Install Metal Door Frames	3 days	Fri 6/22/07	Tue 6/26/07	40														
42	MEP Rough-in in Ceiling	6 days	Wed 6/27/07	Wed 7/4/07	41														
43	Prime Paint Walls	2 days	Thu 7/5/07	Fri 7/6/07	42														
44	Install Carpet	6 days	Mon 7/9/07	Mon 7/16/07	43														
45	Install Base Board	2 days	Tue 7/17/07	Wed 7/18/07	44														
46	Install Ceiling Grid	4 days	Thu 7/19/07	Tue 7/24/07	45														

Project: Detailed Schedule Date: Mon 10/30/06	Task		Progress		Summary		External Tasks		Deadline	
	Split		Milestone		Project Summary		External Milestone			

ID	Task Name	Duration	Start	Finish	Predecessors	September 1		January 1		May 1		September 1		January 1		May 1		September 1	
						7/16	9/10	11/5	12/31	2/25	4/22	6/17	8/12	10/7	12/2	1/27	3/23	5/18	7/13
47	Final Paint Walls	2 days	Wed 7/25/07	Thu 7/26/07	46														
48	Drop Ceiling Tiles	2 days	Fri 7/27/07	Mon 7/30/07	47														
49	Final Cleaning	1 day	Tue 7/31/07	Tue 7/31/07	48														
50	<b>First Floor Construction</b>	72.5 days	Tue 7/31/07	Fri 11/9/07	32														
51	Install Structural Steel	3 days	Wed 8/1/07	Fri 8/3/07															
52	Duct Work Rough-in	10 days	Mon 8/6/07	Fri 8/17/07	51														
53	Fire Protection Rough-in	10 days	Mon 8/20/07	Fri 8/31/07	52														
54	Plumbing Rough-in	5 days	Mon 9/3/07	Fri 9/7/07	53														
55	Electrical Rough-in	5 days	Mon 9/10/07	Fri 9/14/07	54														
56	Metal Wall Stud Framming	5 days	Mon 9/17/07	Fri 9/21/07	55														
57	Insulate Walls	2 days	Mon 9/24/07	Tue 9/25/07	56														
58	Hang Drywall	4 days	Wed 9/26/07	Mon 10/1/07	57														
59	Install Metal Door Frames	3 days	Tue 10/2/07	Thu 10/4/07	58														
60	MEP Rough-in in Ceiling	7 days	Fri 10/5/07	Mon 10/15/07	59														
61	Prime Paint Walls	2 days	Tue 10/16/07	Wed 10/17/07	60														
62	Install Carpet	6 days	Thu 10/18/07	Thu 10/25/07	61														
63	Install Base Board	2 days	Fri 10/26/07	Mon 10/29/07	62														
64	Install Ceiling Grid	4 days	Tue 10/30/07	Fri 11/2/07	63														
65	Final Paint Walls	2 days	Mon 11/5/07	Tue 11/6/07	64														
66	Drop Ceiling Tiles	2 days	Wed 11/7/07	Thu 11/8/07	65														
67	Final Cleaning	1 day	Fri 11/9/07	Fri 11/9/07	66														
68	<b>Second Floor Construction</b>	72.5 days	Fri 11/9/07	Tue 2/19/08	50														
69	Install Structural Steel	4 days	Fri 11/9/07	Wed 11/14/07															
70	Duct Work Rough-in	10 days	Thu 11/15/07	Wed 11/28/07	69														
71	Fire Protection Rough-in	10 days	Thu 11/29/07	Wed 12/12/07	70														
72	Plumbing Rough-in	5 days	Thu 12/13/07	Wed 12/19/07	71														
73	Electrical Rough-in	5 days	Thu 12/20/07	Wed 12/26/07	72														
74	Metal Wall Stud Framming	5 days	Thu 12/27/07	Wed 1/2/08	73														
75	Insulate Walls	2 days	Thu 1/3/08	Fri 1/4/08	74														
76	Hang Drywall	4 days	Mon 1/7/08	Thu 1/10/08	75														
77	Install Metal Door Frames	3 days	Fri 1/11/08	Tue 1/15/08	76														
78	MEP Rough-in in Ceiling	6 days	Wed 1/16/08	Wed 1/23/08	77														
79	Prime Paint Walls	2 days	Thu 1/24/08	Fri 1/25/08	78														
80	Install Carpet	6 days	Mon 1/28/08	Mon 2/4/08	79														
81	Install Base Board	2 days	Tue 2/5/08	Wed 2/6/08	80														
82	Install Ceiling Grid	4 days	Thu 2/7/08	Tue 2/12/08	81														
83	Final Paint Walls	2 days	Wed 2/13/08	Thu 2/14/08	82														
84	Drop Ceiling Tiles	2 days	Fri 2/15/08	Mon 2/18/08	83														
85	Final Cleaning	1 day	Tue 2/19/08	Tue 2/19/08	84														
86	<b>Penthouse Construction</b>	36.25 days	Tue 2/19/08	Wed 4/9/08	68														
87	Install Structural Steel	4 days	Tue 2/19/08	Fri 2/22/08															
88	Duct Work Rough-in	5 days	Mon 2/25/08	Fri 2/29/08	87														
89	Fire Protection Rough-in	5 days	Mon 3/3/08	Fri 3/7/08	88														
90	Plumbing Rough-in	3 days	Mon 3/10/08	Wed 3/12/08	89														
91	Electrical Rough-in	3 days	Thu 3/13/08	Mon 3/17/08	90														
92	Metal Wall Stud Framming	2 days	Tue 3/18/08	Wed 3/19/08	91														



Project: Detailed Schedule  
Date: Mon 10/30/06

Task: Progress: Summary: External Tasks: Deadline: Split: Milestone: Project Summary: External Milestone:

ID	Task Name	Duration	Start	Finish	Predecessors	September 1		January 1		May 1		September 1		January 1		May 1		September 1	
						7/16	9/10	11/5	12/31	2/25	4/22	6/17	8/12	10/7	12/2	1/27	3/23	5/18	7/13
93	Insulate Walls	1 day	Thu 3/20/08	Thu 3/20/08	92														
94	Hang Drywall	2 days	Fri 3/21/08	Mon 3/24/08	93														
95	Install Metal Door Frames	1 day	Tue 3/25/08	Tue 3/25/08	94														
96	MEP Rough-in in Ceiling	2 days	Wed 3/26/08	Thu 3/27/08	95														
97	Prime Paint Walls	1 day	Fri 3/28/08	Fri 3/28/08	96														
98	Install Carpet	2 days	Mon 3/31/08	Tue 4/1/08	97														
99	Install Base Board	1 day	Wed 4/2/08	Wed 4/2/08	98														
100	Install Ceiling Grid	2 days	Thu 4/3/08	Fri 4/4/08	99														
101	Final Paint Walls	1 day	Mon 4/7/08	Mon 4/7/08	100														
102	Drop Ceiling Tiles	1 day	Tue 4/8/08	Tue 4/8/08	101														
103	Final Cleaning	1 day	Wed 4/9/08	Wed 4/9/08	102														
104	<b>Project Close Out</b>	92 days	Wed 4/9/08	Thu 8/14/08															
105	Punch List	55 days	Thu 4/10/08	Wed 6/25/08															
106	Final Inspection	1 day?	Wed 5/14/08	Wed 5/14/08															
107	Flush Building	11 days?	Thu 6/26/08	Thu 7/10/08	105														
108	Move in	25 days?	Fri 7/11/08	Thu 8/14/08	107														

